

\$838,800 - 540 Panatella Court Nw, Calgary

MLS® #A2229456

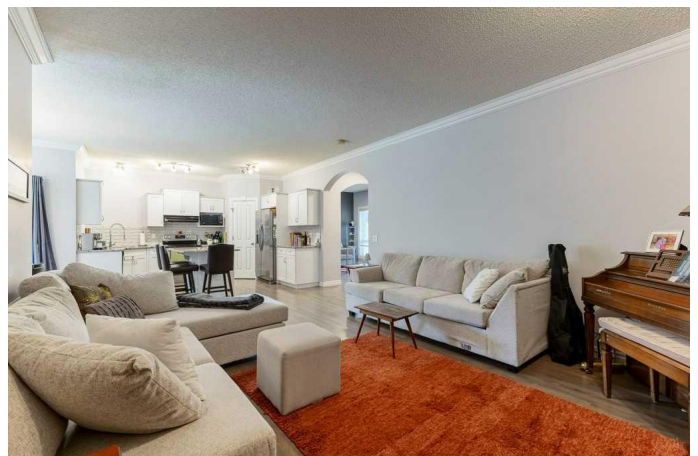
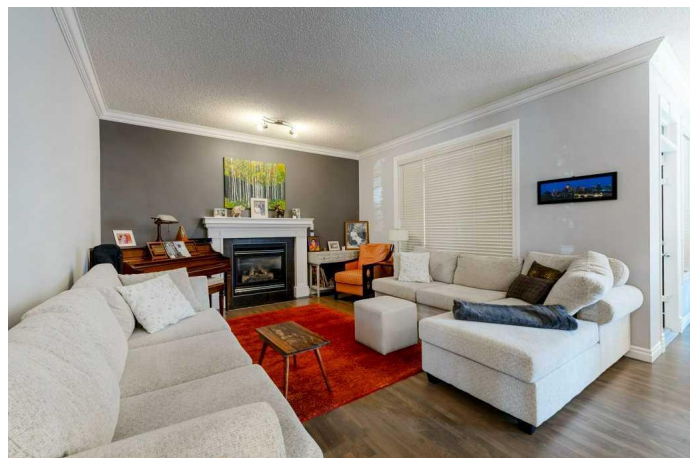
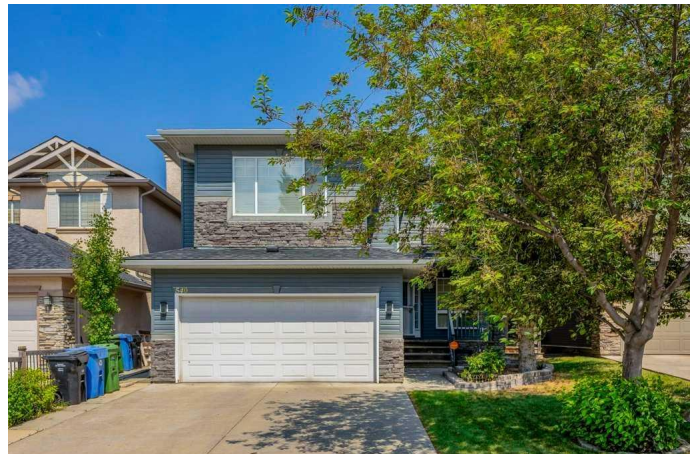
\$838,800

4 Bedroom, 4.00 Bathroom, 2,230 sqft

Residential on 0.10 Acres

Panorama Hills, Calgary, Alberta

This fantastic family home with over 3000 square feet of developed living space is located in the very desirable community of Panorama Hills. Being situated on a quiet cul-de-sac, it is just steps away to the Ravine, a tot lot, community amenities, walking/biking trails, it is ideal for family living. The beautifully renovated kitchen with white cabinets, granite counter tops, subway tile back splash and a centre Island will boost your culinary experience and make family time and entertaining a delight. The Open Concept Floorplan on the spacious main floor boasts 9 ft ceilings creating an open, airy, light ambiance. A large Family Room with its highlighted fireplace is open to the kitchen and the Dining Area. For those with a green thumb you will enjoy the large Sun room. Perfect for your flowers and or an Art studio. A main floor Den and a Laundry room that opens to the double attached garage complete the main floor plan. New carpet and beautifully refinished hardwood throughout. On the Upper-Level step into the Luxurious Primary Bedroom and discover your own private retreat. It includes a 5-piece en-suite with dual vanities, separate shower and a deep soaker tub as beautifully designed. Additionally, the Upper Level offers a massive Bonus room, two bedrooms and a 4-piece bathroom. Family living at its™s best. Private side entrance with access to the basement. The Basement has been developed with an illegal suite that could easily accommodate



multi-generational family living. It includes a recreation room, a large 4th bedroom, 4- piece bath and a second kitchen/ bar. Moving on outside you will enjoy back yard BBQâ€™s and entertaining family and friends on the sprawling full width deck. Nicely landscaped with an abundance of mature trees and shrubs. This is a superb home in an ideal location! Quick access to major shopping centre, walking distance to Super Store and minutes to Deerfoot and Stoney Trail. Many recent upgrades throughout including New tile and quartz countertops in all bathrooms, carpet throughout, New Refrigerator. Granite and back splash in Kitchen. Great value. Shows 10 out of 10.

Built in 2005

Essential Information

MLS® #	A2229456
Price	\$838,800
Bedrooms	4
Bathrooms	4.00
Full Baths	3
Half Baths	1
Square Footage	2,230
Acres	0.10
Year Built	2005
Type	Residential
Sub-Type	Detached
Style	2 Storey
Status	Active

Community Information

Address	540 Panatella Court Nw
Subdivision	Panorama Hills
City	Calgary
County	Calgary
Province	Alberta

Postal Code T3K 5Z7

Amenities

Amenities Other
Parking Spaces 4
Parking Double Garage Attached
of Garages 2

Interior

Interior Features Breakfast Bar, Double Vanity, French Door, High Ceilings, Kitchen Island, Open Floorplan, Pantry, See Remarks, Separate Entrance, Track Lighting, Crown Molding
Appliances Dishwasher, Electric Stove, Garage Control(s), Microwave, Range Hood, Refrigerator, Washer/Dryer, Window Coverings
Heating Forced Air, Natural Gas
Cooling None
Fireplace Yes
of Fireplaces 1
Fireplaces Gas
Has Basement Yes
Basement Finished, Full

Exterior

Exterior Features Private Yard
Lot Description Back Lane, Few Trees, Landscaped, Lawn, Level
Roof Asphalt Shingle
Construction Stone, Vinyl Siding, Wood Frame
Foundation Poured Concrete

Additional Information

Date Listed June 10th, 2025
Days on Market 5
Zoning R-G
HOA Fees 263
HOA Fees Freq. ANN

Listing Details

Listing Office RE/MAX House of Real Estate

Data is supplied by Pillar 9â„¢ MLSÂ® System. Pillar 9â„¢ is the owner of the copyright in its MLSÂ® System. Data is deemed reliable but is not guaranteed accurate by Pillar 9â„¢. The trademarks MLSÂ®, Multiple Listing ServiceÂ® and

the associated logos are owned by The Canadian Real Estate Association (CREA) and identify the quality of services provided by real estate professionals who are members of CREA. Used under license.